

TRIBECA

GREGORY HILLS. NSW.

Lot 3007 - Barrett Street, Gregory Hills, NSW 2557



HOUSE & LAND
\$695,980 FIXED PRICE

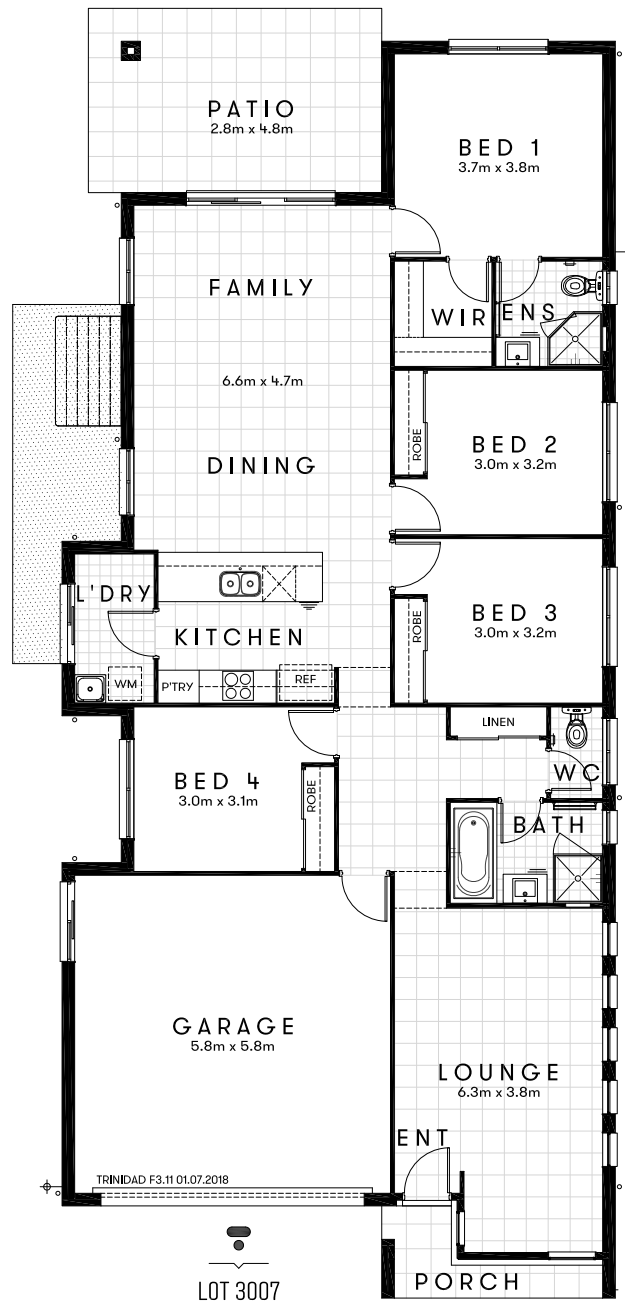


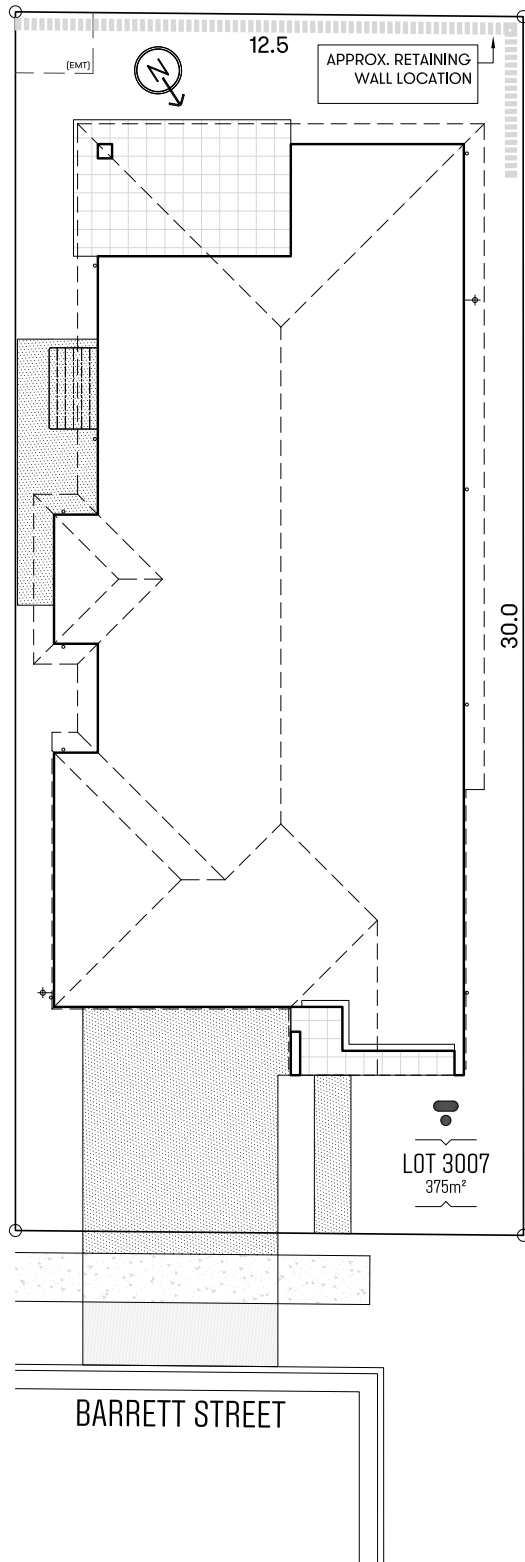
Approx. House Area 209m²
Land Area 375m²

House Price \$300,980
Land Price \$395,000

TRIBECA

Design Trinidad F3.11 Approx. House Area 209m²
Land Area 375m² House Price \$300,980 Land Price \$395,000





HOME OVERVIEW

Design Trinidad F3.11

Approx. House Area 209m²

Land Area 375m²

House Price \$300,980

Land Price \$395,000

QUALITY INCLUSIONS

- Fixed site costs, no surprises
- 2590mm raised ceiling height
- 20mm manufactured stone bench top to kitchen, bathroom and ensuite
- Quality stainless steel appliances
- Carpeted and tiled throughout
- Superior fittings and fixtures
- Under-mount sink to kitchen
- Floating vanities to bathroom and ensuite
- Niches to bathroom and ensuite showers
- Flyscreens to windows, security screens to external doors
- Blinds throughout
- Covered alfresco
- Turfed and landscaped
- Colour through concrete driveway and pathways
- Fully fenced
- Clothesline & letterbox
- 3 coat paint system
- All homes include BASIX requirements
- Professionally selected external and internal colours and materials

A PLACE OF BRILLIANT OPPORTUNITY

NESTLED WITHIN THE BOOMING SUBURB OF
GREGORY HILLS, JUST 50KM SOUTH OF THE SYDNEY
CBD, DREAMSCAPE OFFERS A NEW NEIGHBOURHOOD
OF ARCHITECTURALLY DESIGNED HOMES, GREEN
OPEN SPACES AND FRIENDLY COMMUNITY LIVING.

Dreamscape is perfectly placed with shopping, schools, parks and everything you need at your door, balancing quiet village life with easy access to the city. Designed and delivered by Tribeca, Dreamscape is part of a larger staged release in the area. This thriving precinct has already seen hundreds of purchasers take advantage of a unique and dynamic location, ensuring that Dreamscape will be a vibrant new addition to a flourishing community for generations to come.

