

TRIBECA



BRASSALL. QLD.

Lot 23 - Arburry Crescent, Brassall, QLD 4305



Artists impression

GAINSBOROUGH
MEADOWS

HOUSE & LAND
\$389980 FIXED PRICE



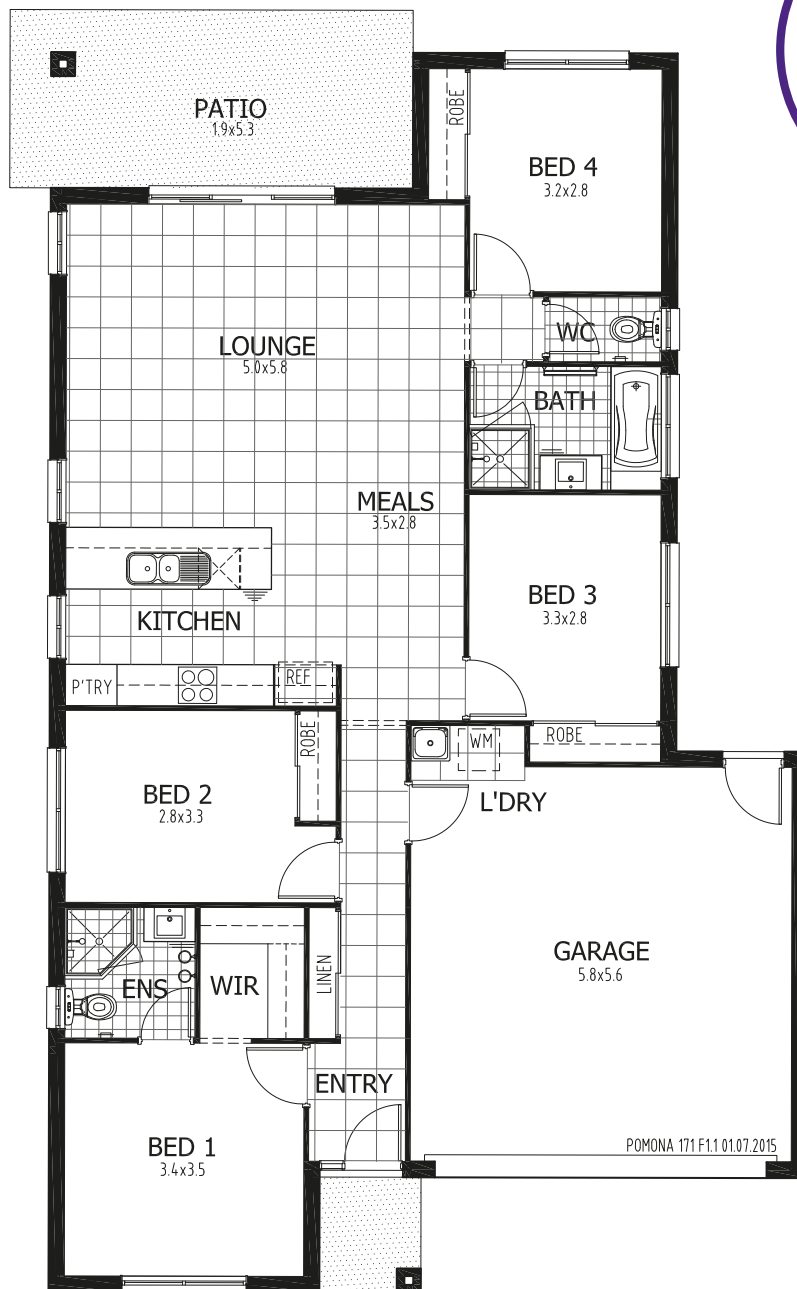
Approx. House Area 170m²
Land Area 396m²

House Price \$219,980
Land Price \$170,000

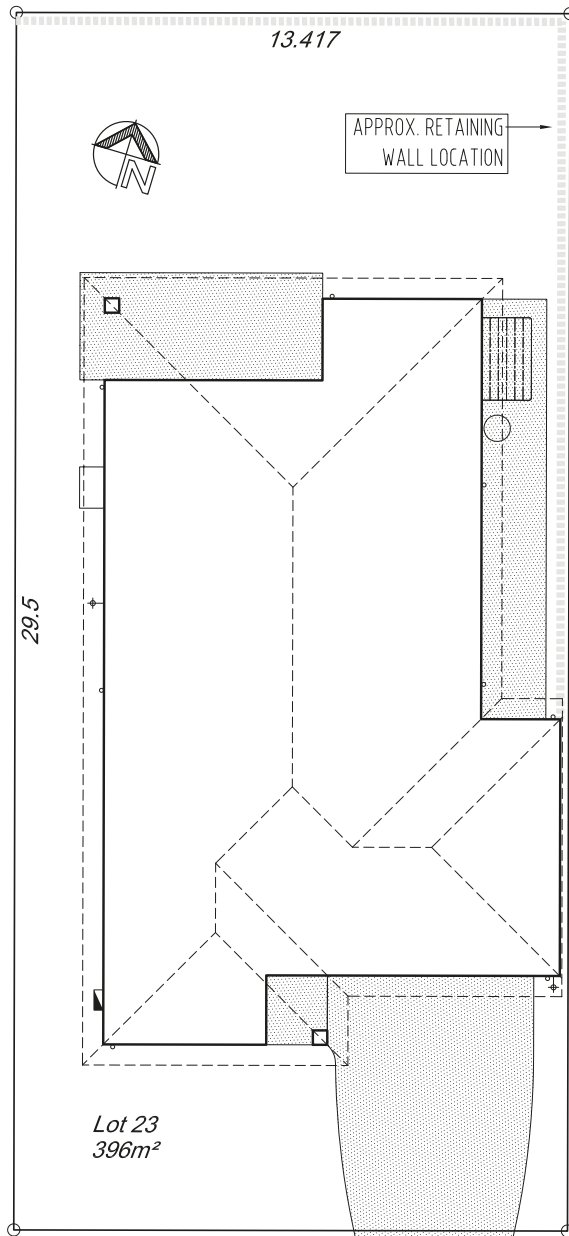
TRIBECA

Design Pomona 171 F1.1 Approx. House Area 170m²
Land Area 396m² House Price \$219,980 Land Price \$170,000

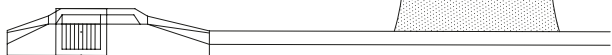
Free split
system A/C for
prompt finance
approval



TRIBECA



Lot 23
396m²



ARBURRY CRESCENT

HOME OVERVIEW

Design Pomona 171 F1.1

Approx. House Area 170m²

Land Area 396m²

House Price \$219,980

Land Price \$170,000

QUALITY INCLUTIONS

- Fixed site costs, no surprises
- Carpeted and tiled throughout
- 2590mm nominal ceiling height
- Manufactured stone bench top to kitchen, bathroom & ensuite
- Quality stainless steel appliances
- Superior fittings and fixtures
- Fly screens & security screens to external doors
- Blinds throughout
- Covered alfresco
- Turfed & Landscaped
- Driveway & pathways
- Fully fenced
- Clothesline & letterbox
- Preselected colours; Interior designers have created stylish interiors